



HYDRAULIC MOUNTS FOR SECURELY MOUNTED VEHICLE CABINS

COMMERCIAL
VEHICLES –
SELF PROPELLED
MOBILE MACHINES



HYDRAULIC MOUNTS

PERFORMANCE THROUGH COMFORT

Hydraulic mounts from Fabreeka combine a spring (elastomer) with viscous damping in one enclosed unit.

Our products reduce noise and vibration, thereby increasing safety and comfort for the user, particularly in heavy duty applications.

TECHNICAL PROPERTIES

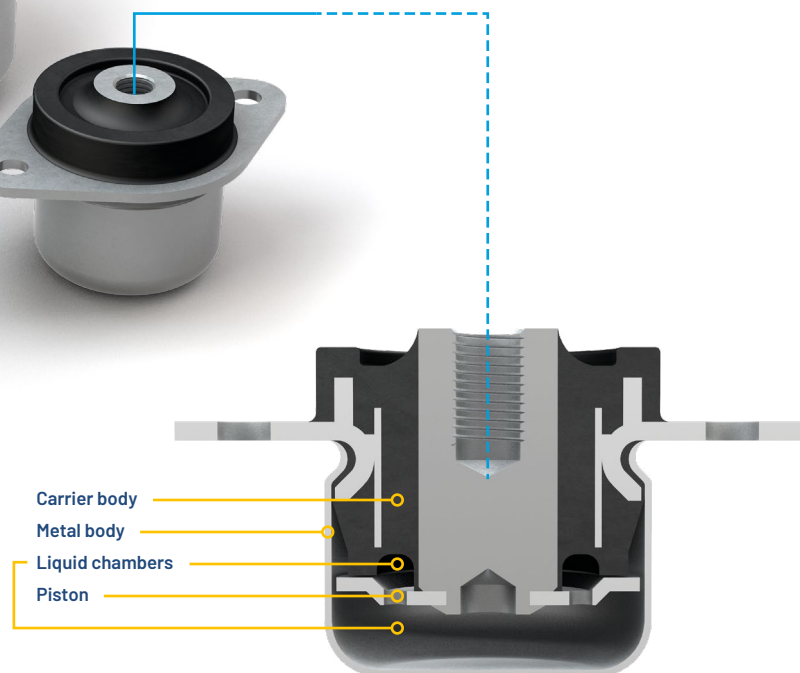
Years of experience and intensive testing and analysis make Fabreeka a leading company in the field of impact and vibration isolation. Fabreeka's hydraulic mounts combine elastomeric and viscous liquid damping technology to reduce cabin noise and vibration. The result is noticeable and demonstrably superior to conventional elastomeric mounts.

Hydraulic mounts are versatile, since the mounts can be adapted precisely to the requirements at hand. Our customers benefit from a quieter workspace, less vibration and shocks inside the cabin, as well as lower costs due to the obsolescence of reinforcing material and welding points on the cabin.



Years of experience in industrial vehicle manufacturing showed us that every cabin design needs an individualized spring-damper solution.

Therefore, we develop products that differ in size, features and weight, to suit the different applications of such vehicles.



APPLICATIONS

Hydraulic mounts from Fabreeka are mainly designed for the vibration and impact isolation of cabins and engines of industrial vehicles, such as construction, farming and municipal machinery.

The operating principle of our hydraulic mounts is simple and safe. The spring deflection needed for optimal vibration isolation is maximized by the low axial rigidity of the elastomer carrier body. At the same time, the lateral stability of the system is ensured through a relatively high radial rigidity.

Compared to elastomer-based mounts, the damping effect of hydraulic mounts is very strong. Hydraulic mounts are particularly effective when an engine is started or turned off. This notably increases operating comfort, while fulfilling stringent requirements with respect to breakage protection and longevity.

PROPERTIES & ADVANTAGES

Operating Comfort

Vibration is significantly reduced. The noise drops by up to 5-10 dB(A).

Reliability

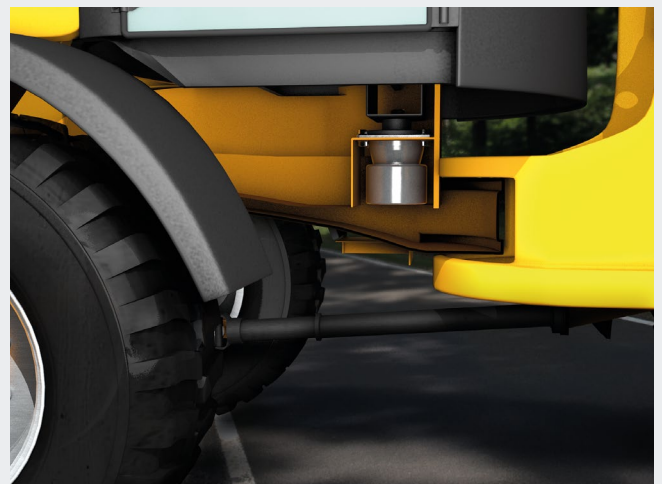
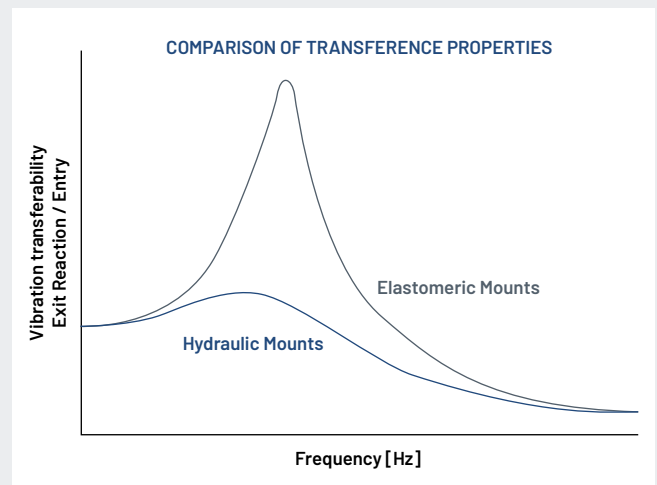
Multiple times more effective than conventional elastomerbased mounts, while being more effective in the temperature range between -40°C and $+80^{\circ}\text{C}$.

Effectiveness

Cost savings due to the obsolescence of reinforcements and welding points on the cabin. No damage to the cabin when driving in rough terrain.

Efficiency

Vibration decay time of the cabin can be reduced by up to 50%.



Stress on the driver is lowered due to optimized comfort, thereby increasing performance and driving safety. This is achieved by decoupling the dampers from the chassis and using Fabreeka hydraulic mounts for cabin suspension.

PRODUCT SAMPLES

PROVEN IN HEAVY DUTY OPERATION

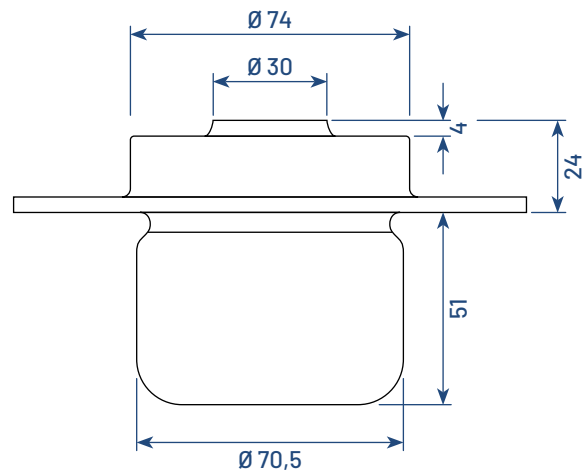
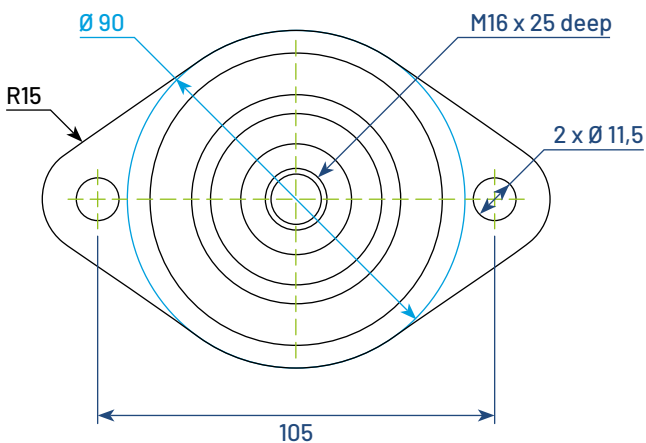
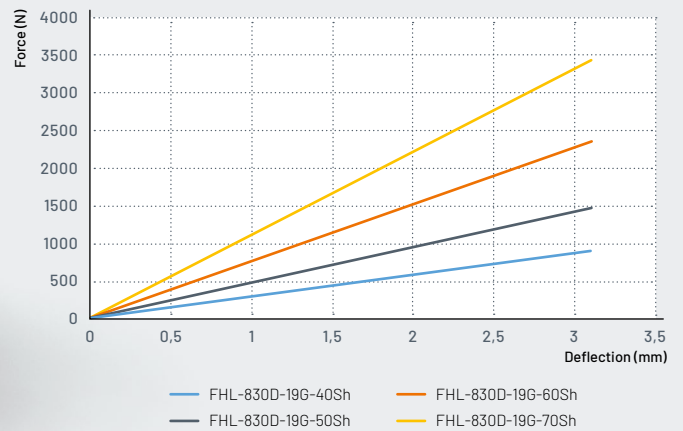
FHL SERIES 1

This series is designed for light to medium stress applications. It is used where vibrations and shocks occur, with the goal of quickly reducing any oscillation of the system - for example in the cabin suspension of forklift trucks. This effect is achieved by using increased damping.

Fabreeka P/N	Hardness (ShA)	Nominal stiffness (N/mm)	max. static load (N)
FHL-830D-19G-40Sh	40	300	850
FHL-830D-19G-50Sh	50	450	1.400
FHL-830D-19G-60Sh	60	700	2.300
FHL-830D-19G-70Sh	70	1.000	3.400



FHL-830D-19G



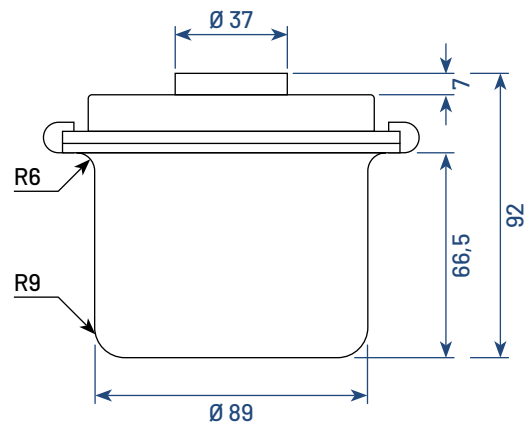
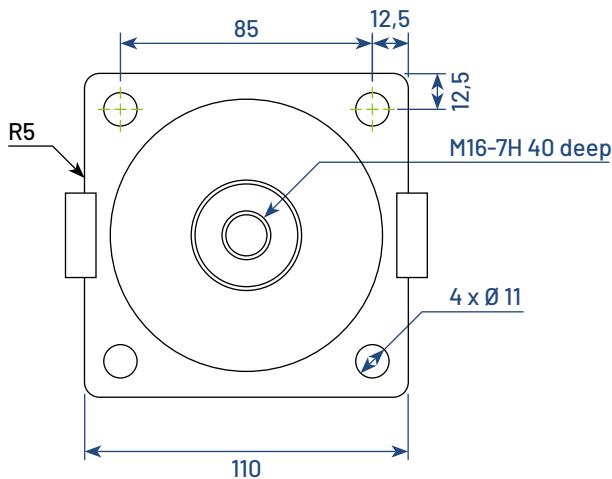
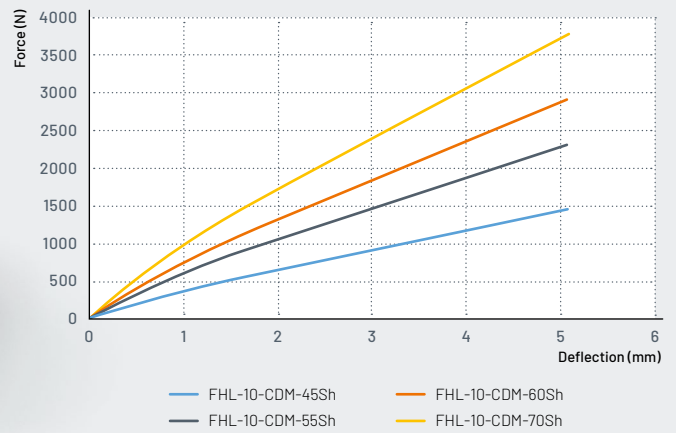
FHL SERIES 2

Hydraulic mounts in this series feature an integrated and very broadband vertical damping ability. This makes it possible to dampen shocks very effectively. In addition, they have an integrated rebound stop. They are commonly used in the suspension of pumps, compressors and engines with a low-frequency excitation spectrum. Series 2 hydraulic mounts are also available in stainless steel.

Fabreeka P/N	Hardness (ShA)	Nominal stiffness (N/mm)	max. static load (N)
FHL-10-CDM-45Sh	45	300	1.400
FHL-10-CDM-55Sh	55	500	2.300
FHL-10-CDM-60Sh	60	600	2.800
FHL-10-CDM-70Sh	70	800	3.700



FHL-10-CDM



PRODUCT SAMPLES

PROVEN IN HEAVY DUTY OPERATION

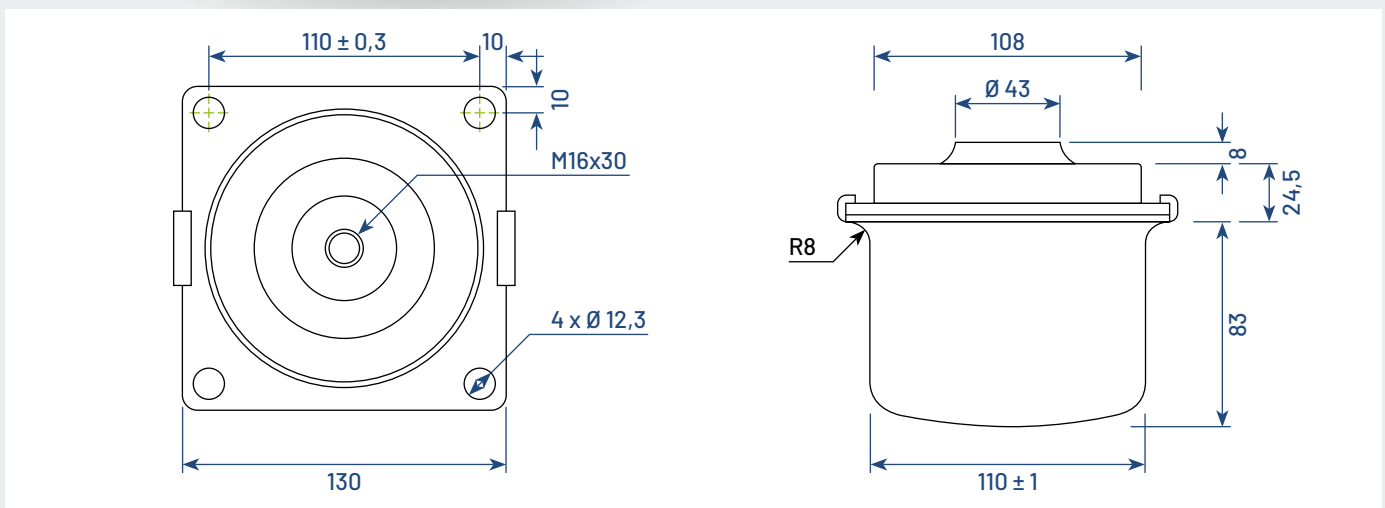
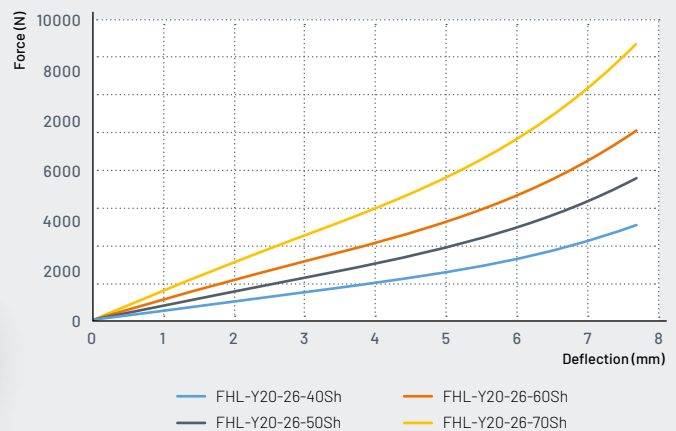
FHL SERIES 3

Series 3 hydraulic mounts are extremely robust and tear-proof. They also feature a very strong transverse rigidity and increased vertical damping. Since the damping effect can be adjusted through the use of different damping materials, these elements are particularly suited to the mounting of heavy cabins in the field of construction machinery. They are also used for mounting large engines.

Fabreeka P/N	Hardness (ShA)	Nominal stiffness (N/mm)	max. static load (N)
FHL-Y20-26-40Sh	40	350	2.000
FHL-Y20-26-50Sh	50	400	3.000
FHL-Y20-26-60Sh	60	800	4.000
FHL-Y20-26-70Sh	70	1.000	6.000



FHL-Y20-26

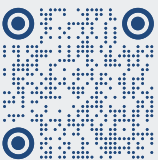






Fabreeka GmbH Deutschland

Hessenring 13
64572 Büttelborn
Germany
T +49 6152 - 9597-0
info@fabreeka.de
www.fabreeka.de

QR code takes you to our
International Locations



 [LinkedIn @fabreeka_international](#)
 [Facebook @fabreeka_international](#)